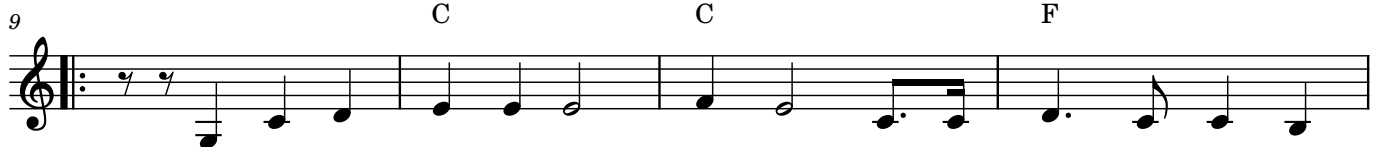
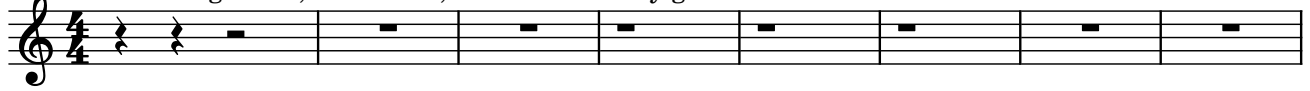


# Yandeyarra

Vi Lewin

♩ = 180

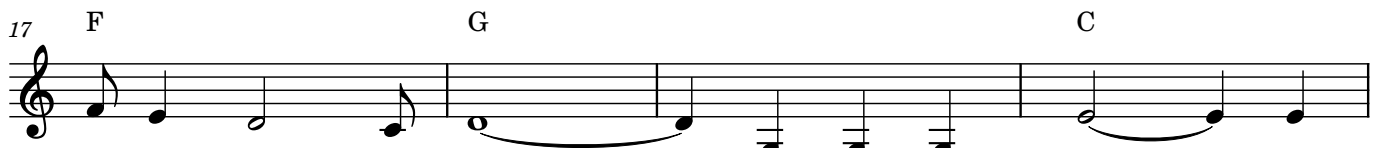
didgeridoo, clicksticks, fade into country guitars



1. On Yan - de - yarr - a Stat - ion where the skies are ver - y  
 2. Just at - sun - set after tea time at the home - stead house I  
 3. When the pink sun set's fad - ing and the night\_\_\_ draws in



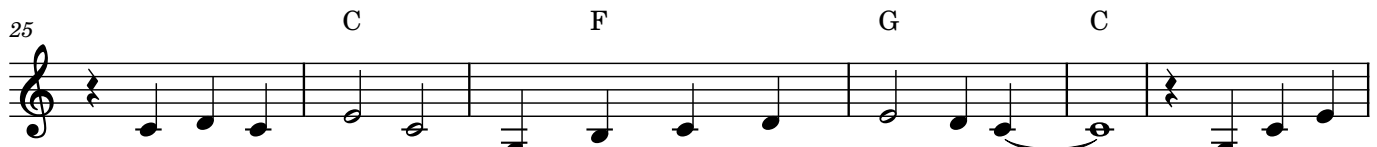
blue - I that's the place where I would al - ways  
 sing I hear the distant cattle call - ing as the  
 near silve - ry stars twinkling bright, the moon\_\_\_



ev - er want to be\_\_\_ the sand - y creeks and  
 sun sets in the west;\_\_\_ dark child - ren playing old  
 glor - i - ous app - ears,\_\_\_ I catch the feel - ing of



rock - y riv - ers\_\_\_ have a strange pow - er on me\_\_\_  
 peop - le laugh - ing, - talking - around the blaz - ing camp - fire  
 the - dream - time - spir - its - from so long\_\_\_ a - go\_\_\_



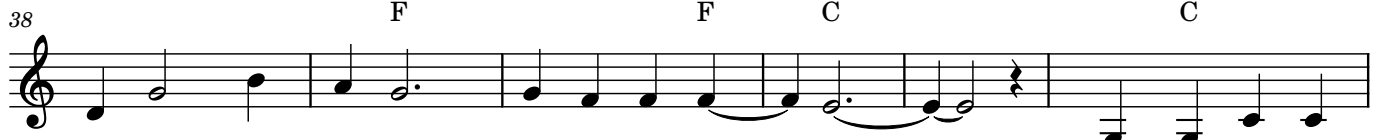
and purp - le rang - es, well they keep call - ing to me\_\_\_ Oh Yan - de -  
 on Yan - de - yarr - a, the place they love\_\_\_ the best\_\_\_  
 and gent - le voic - es so strong - ly draw - ing me so\_\_\_



yarr - a, Oh, oh Oh, Yan - de - yarr - a oh - oh - oh; I hear the whis - pers

2

38




call-ing, just as night is soft-ly - fall - ing; There's mag - ic in

F F C C

Detailed description: This block contains the first line of music, measures 38 through 43. It is written on a single treble clef staff. The melody consists of quarter and eighth notes, with some notes beamed together. Chord symbols F, C, and C are placed above the staff. The lyrics are: "call-ing, just as night is soft-ly - fall - ing; There's mag - ic in".

44



the beaut-y of this hard rugg - ed count-ry, though I may-trav - el far from my

C F F F F

Detailed description: This block contains the second line of music, measures 44 through 48. It is written on a single treble clef staff. The melody consists of quarter and eighth notes. Chord symbols C, F, F, F, and F are placed above the staff. The lyrics are: "the beaut-y of this hard rugg - ed count-ry, though I may-trav - el far from my".

49



home from here my heart will nev - er ev - er roam.

C G G F G C

Detailed description: This block contains the third line of music, measures 49 through 53. It is written on a single treble clef staff. The melody consists of quarter and eighth notes, ending with a double bar line. Chord symbols C, G, G, F, G, and C are placed above the staff. The lyrics are: "home from here my heart will nev - er ev - er roam.".